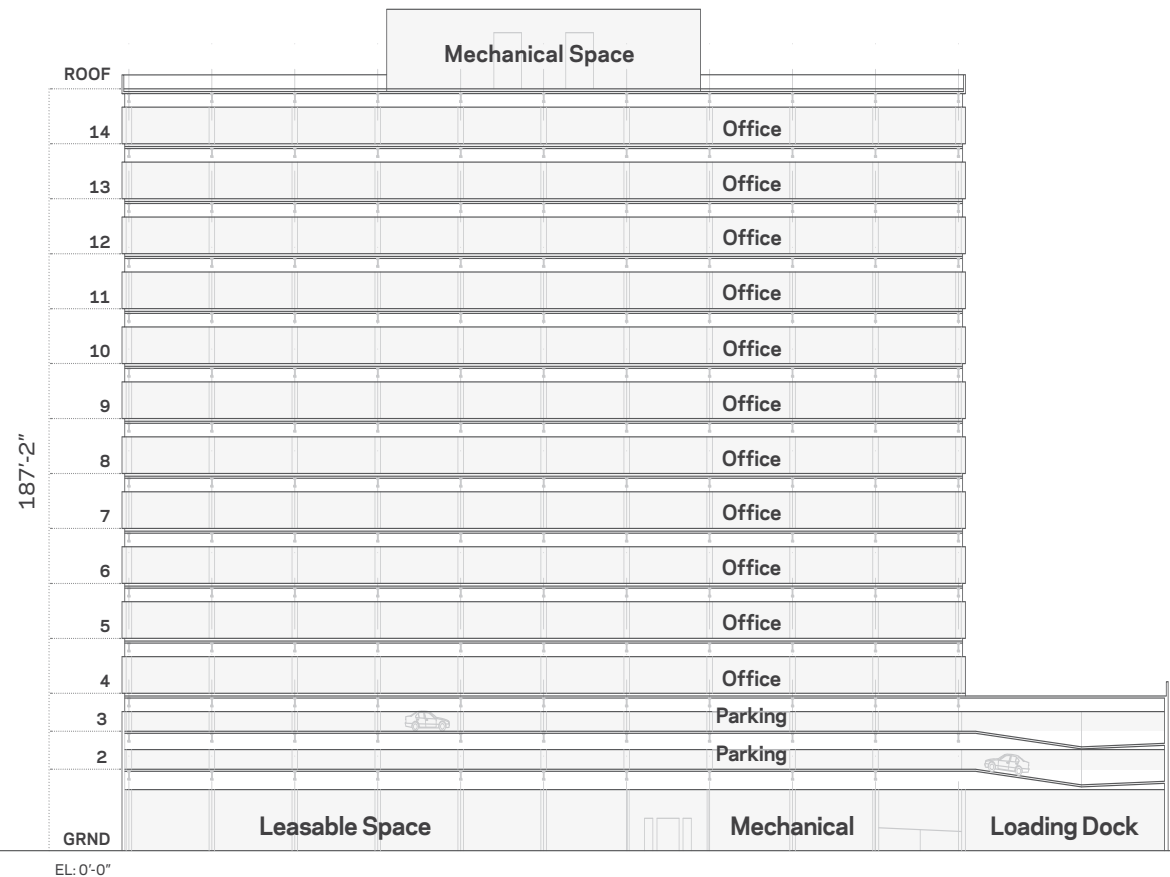


All dimensions and areas are approximate and are subject to change due to job conditions. Dimensions may vary from floor to floor. Doors and windows may vary.

Pier Six Leasing
Newport
Jersey City, New Jersey

Marylou Berk
Head of Commercial Real Estate
MBerk@LeFrak.com
(212) 708-6650

Jamie LeFrak
Principal
(212) 708-6670

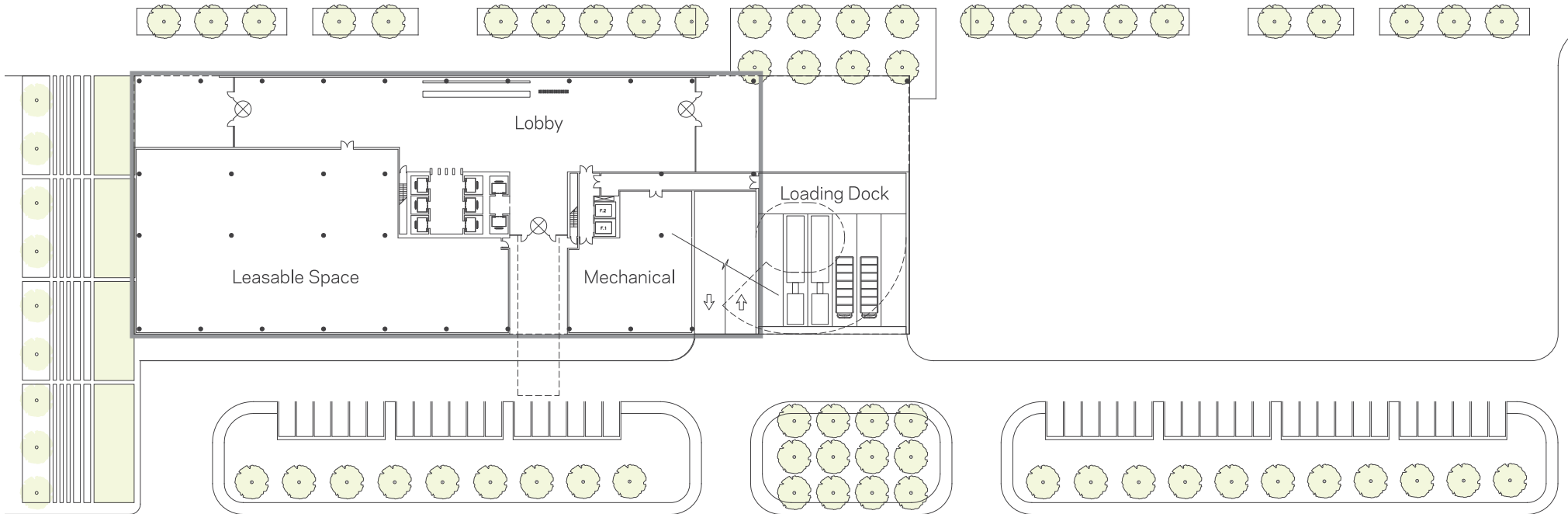


All dimensions and areas are approximate and are subject to change due to job conditions. Dimensions may vary from floor to floor. Doors and windows may vary.

Pier Six Leasing
Newport
Jersey City, New Jersey

Marylou Berk
Head of Commercial Real Estate
MBerk@LeFrak.com
(212) 708-6650

Jamie LeFrak
Principal
(212) 708-6670

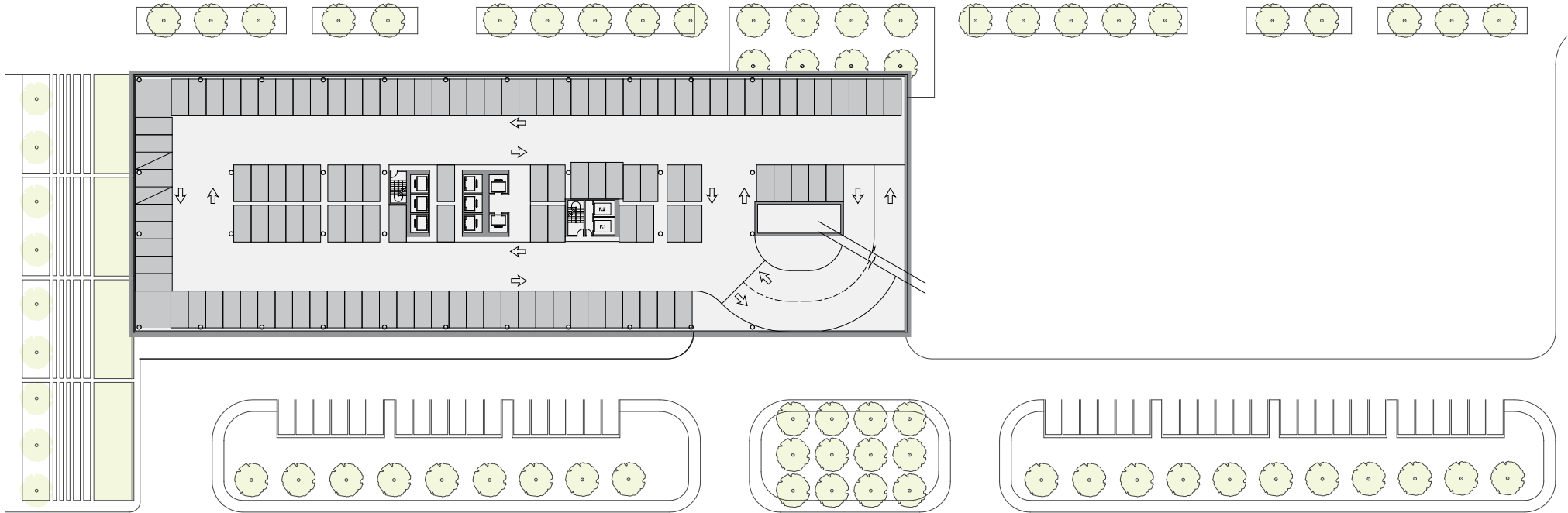


All dimensions and areas are approximate and are subject to change due to job conditions. Dimensions may vary from floor to floor. Doors and windows may vary.

Pier Six Leasing
Newport
Jersey City, New Jersey

Marylou Berk
Head of Commercial Real Estate
MBerk@LeFrak.com
(212) 708-6650

Jamie LeFrak
Principal
(212) 708-6670

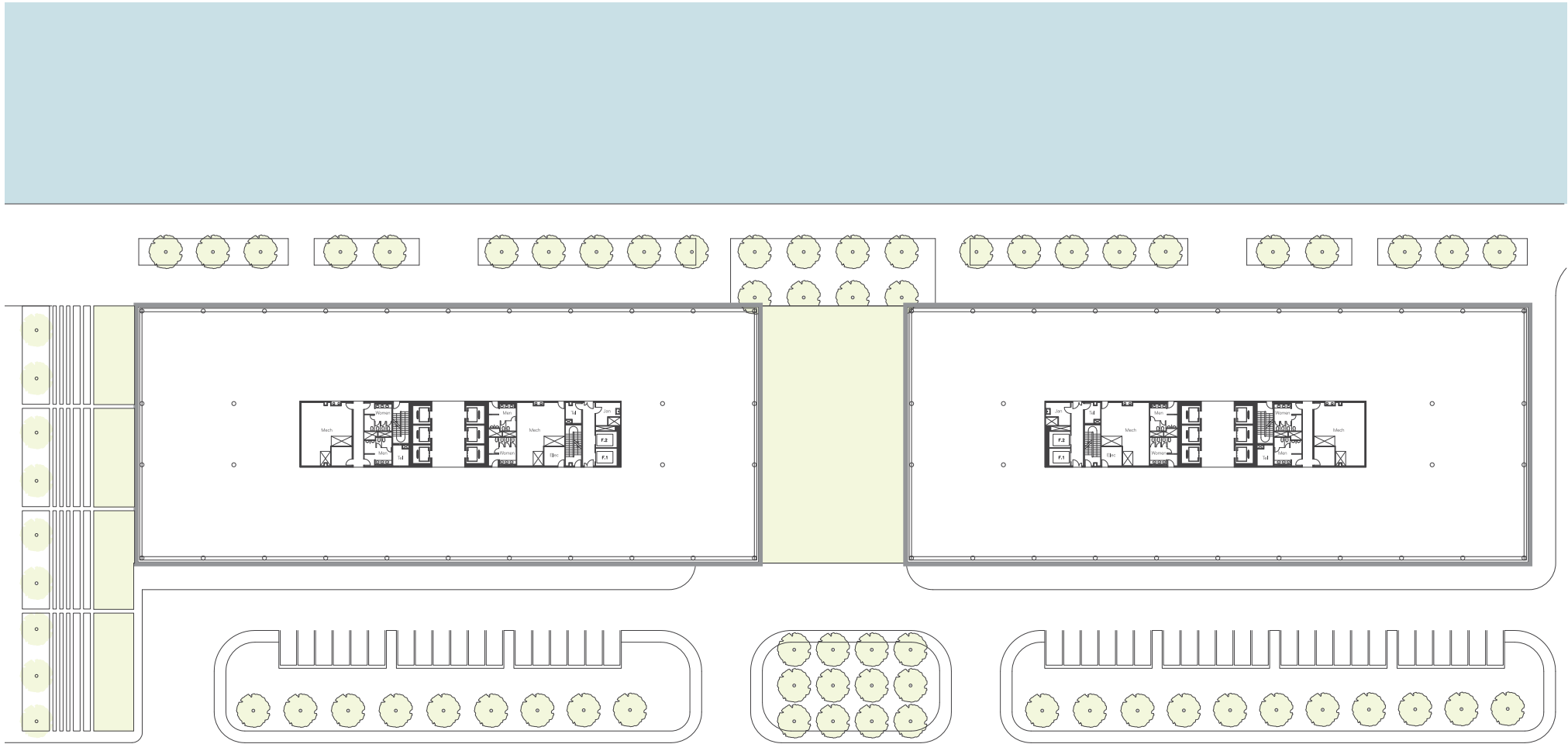


All dimensions and areas are approximate and are subject to change due to job conditions. Dimensions may vary from floor to floor. Doors and windows may vary.

Pier Six Leasing
Newport
Jersey City, New Jersey

Marylou Berk
Head of Commercial Real Estate
MBerk@LeFrak.com
(212) 708-6650

Jamie LeFrak
Principal
(212) 708-6670

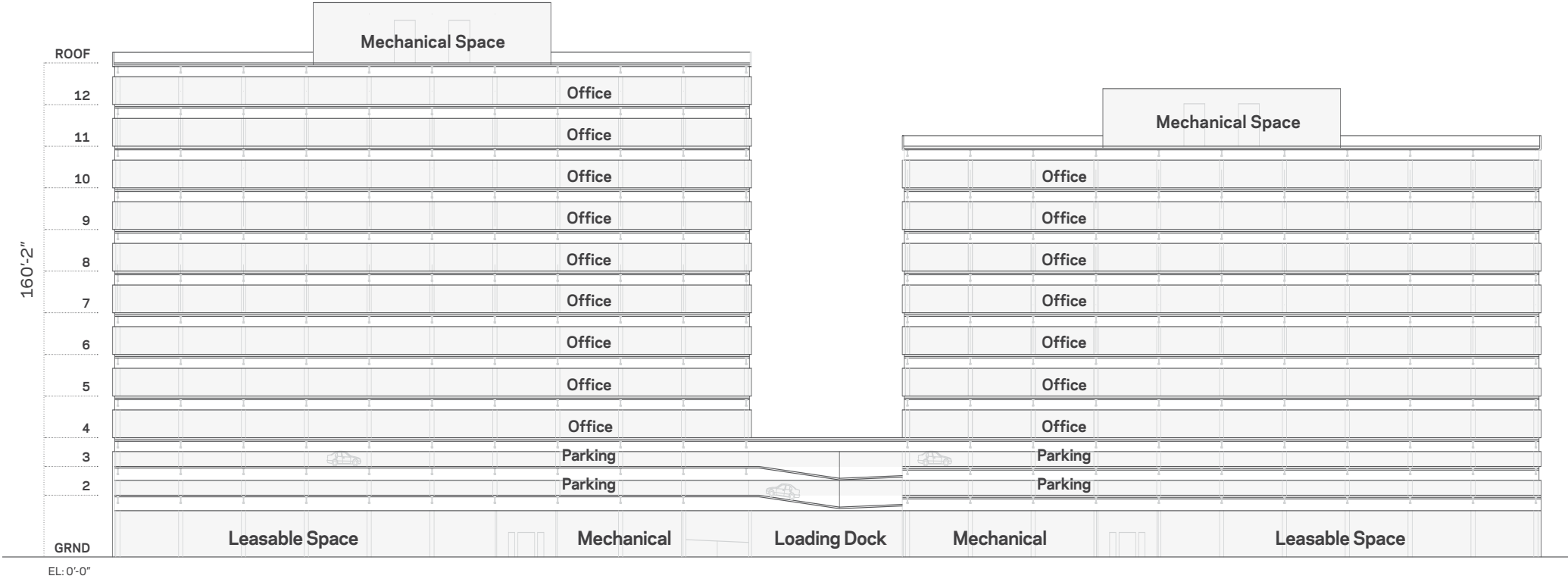


All dimensions and areas are approximate and are subject to change due to job conditions. Dimensions may vary from floor to floor. Doors and windows may vary.

Pier Six Leasing
Newport
Jersey City, New Jersey

Marylou Berk
Head of Commercial Real Estate
MBerk@LeFrak.com
(212) 708-6650

Jamie LeFrak
Principal
(212) 708-6670

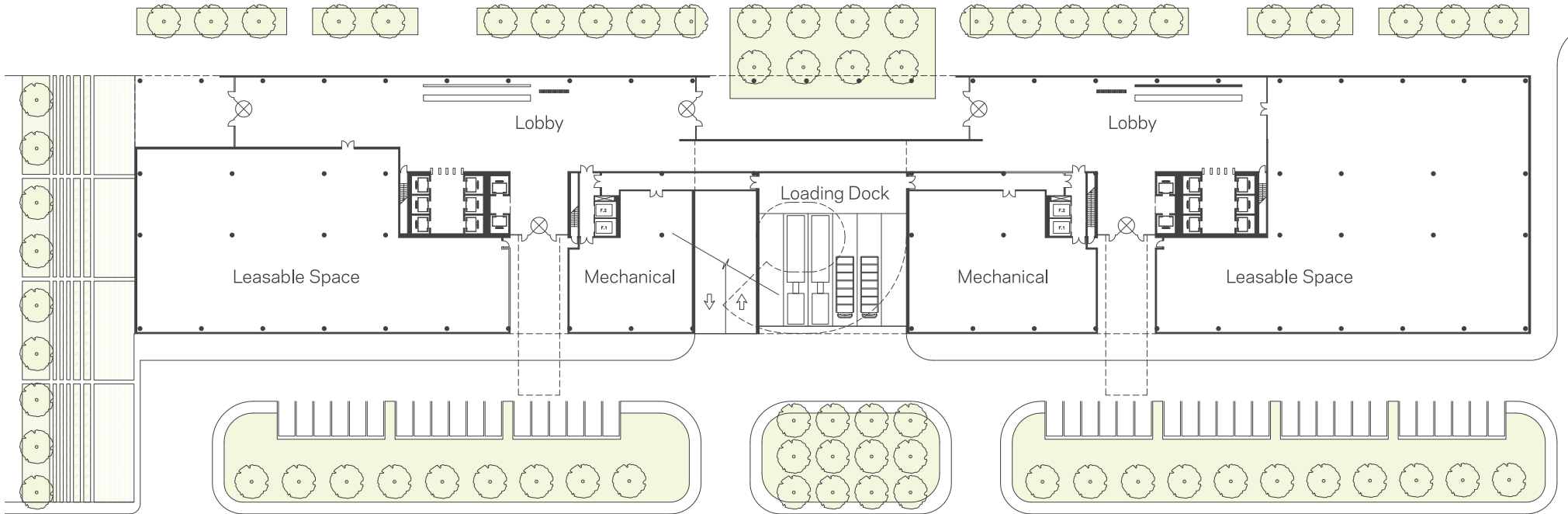


All dimensions and areas are approximate and are subject to change due to job conditions. Dimensions may vary from floor to floor. Doors and windows may vary.

Pier Six Leasing
Newport
Jersey City, New Jersey

Marylou Berk
Head of Commercial Real Estate
MBerk@LeFrak.com
(212) 708-6650

Jamie LeFrak
Principal
(212) 708-6670

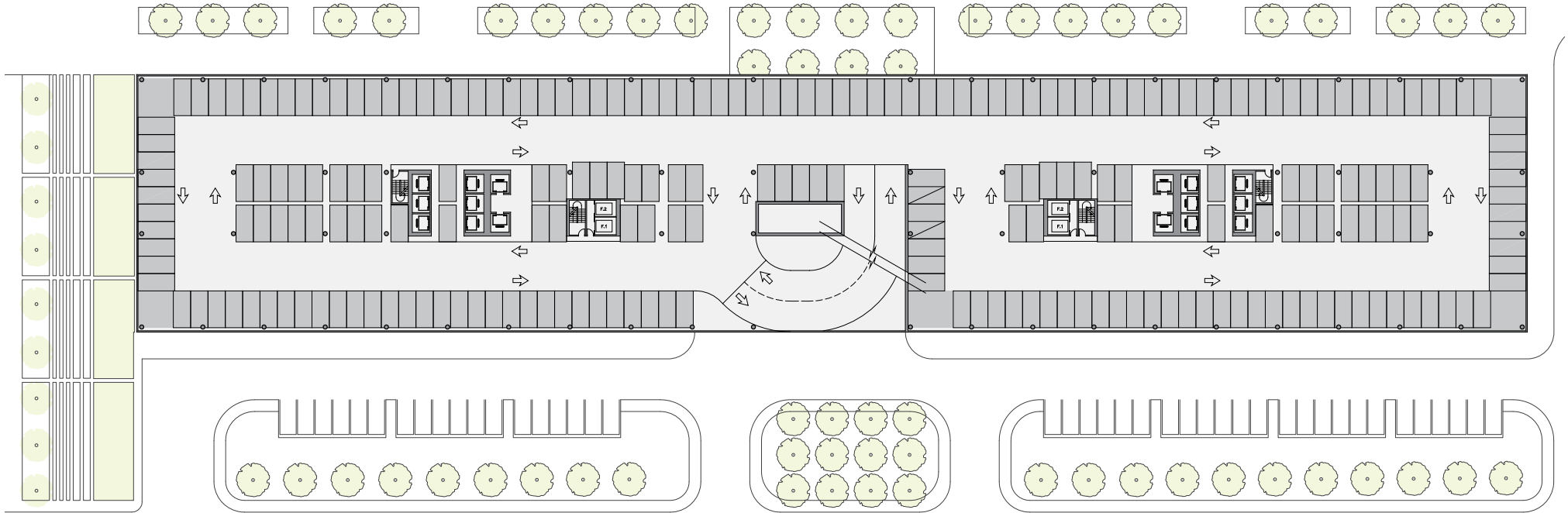


All dimensions and areas are approximate and are subject to change due to job conditions. Dimensions may vary from floor to floor. Doors and windows may vary.

Pier Six Leasing
Newport
Jersey City, New Jersey

Marylou Berk
Head of Commercial Real Estate
MBerk@LeFrak.com
(212) 708-6650

Jamie LeFrak
Principal
(212) 708-6670

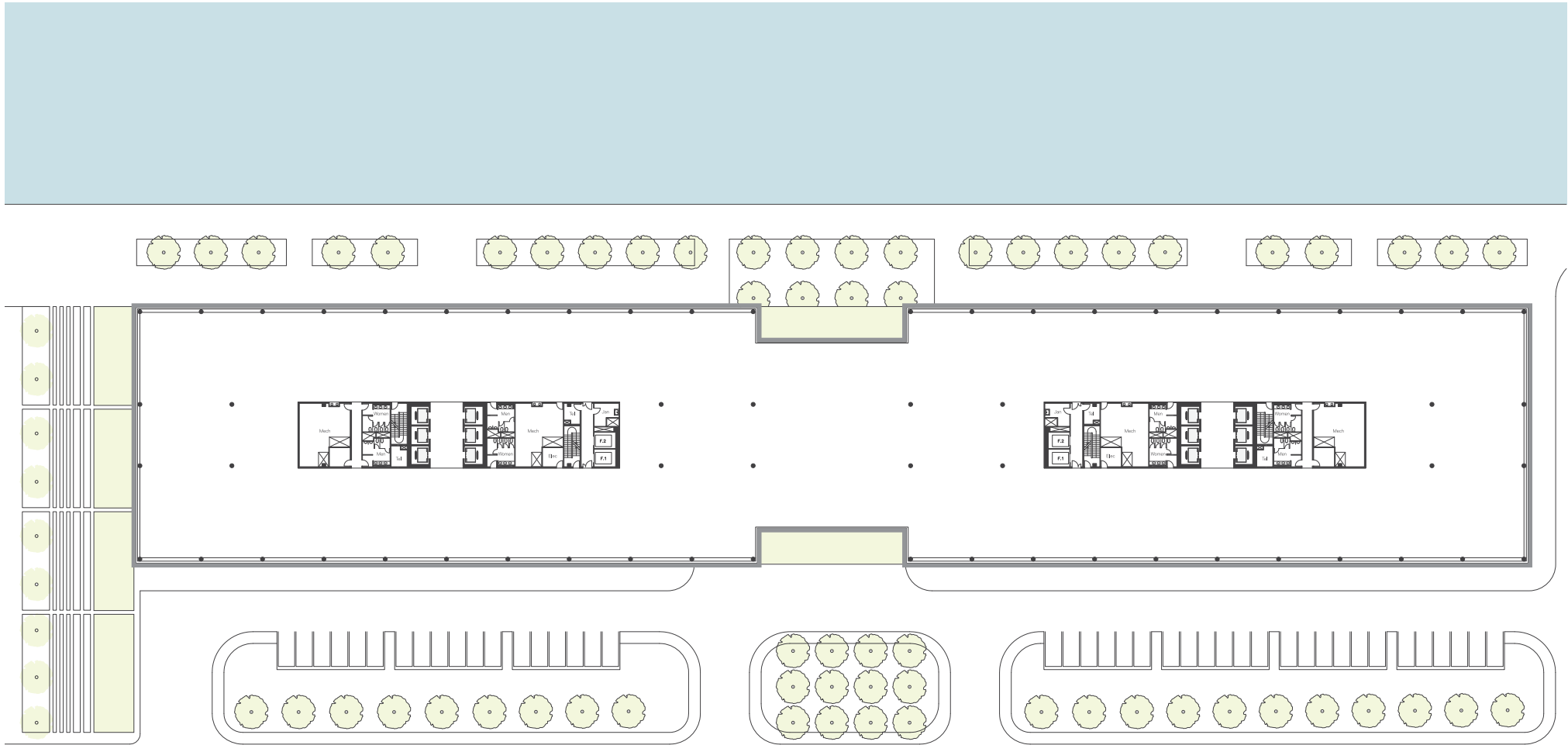


All dimensions and areas are approximate and are subject to change due to job conditions. Dimensions may vary from floor to floor. Doors and windows may vary.

Pier Six Leasing
Newport
Jersey City, New Jersey

Marylou Berk
Head of Commercial Real Estate
MBerk@LeFrak.com
(212) 708-6650

Jamie LeFrak
Principal
(212) 708-6670

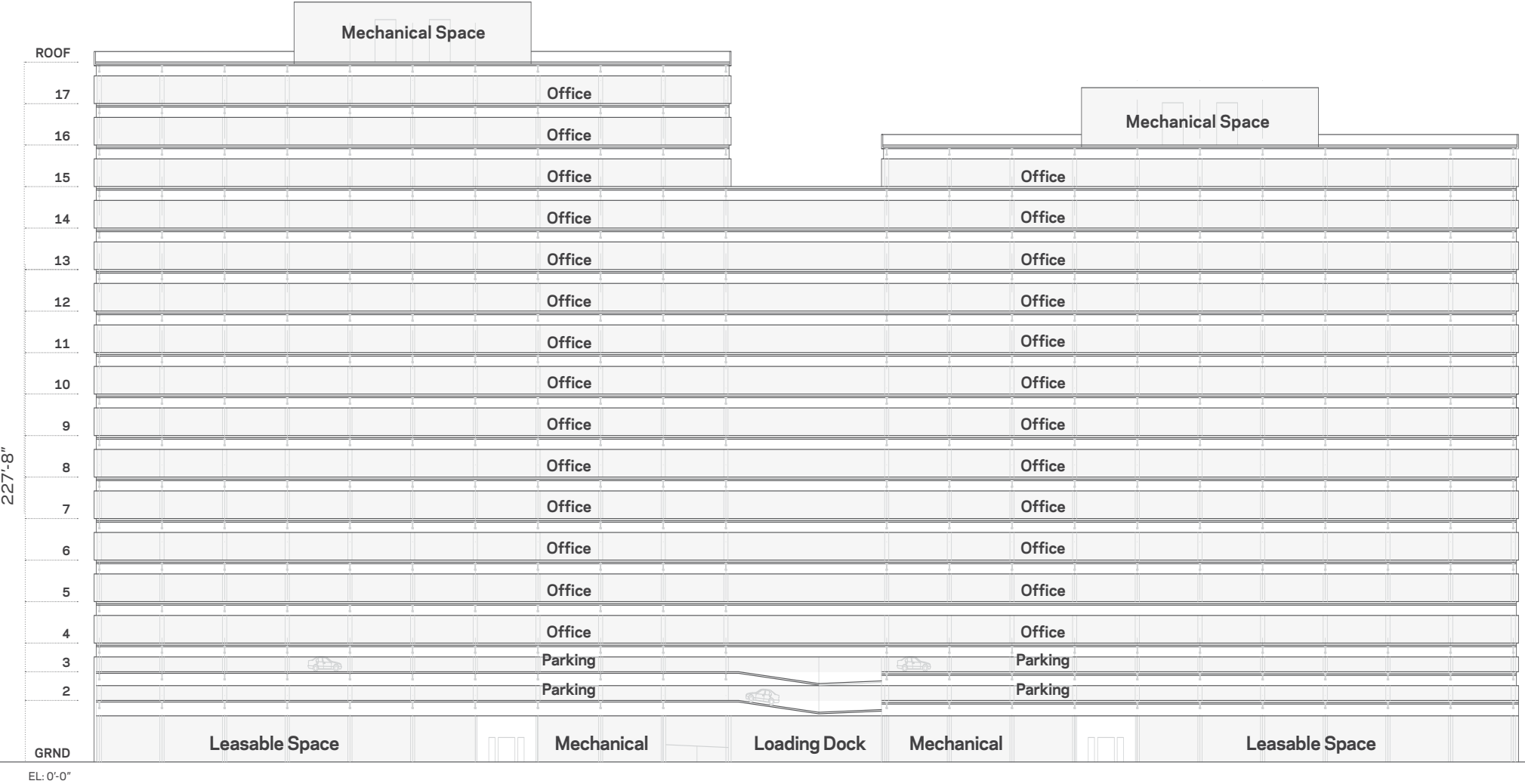


All dimensions and areas are approximate and are subject to change due to job conditions. Dimensions may vary from floor to floor. Doors and windows may vary.

Pier Six Leasing
Newport
Jersey City, New Jersey

Marylou Berk
Head of Commercial Real Estate
MBerk@LeFrak.com
(212) 708-6650

Jamie LeFrak
Principal
(212) 708-6670

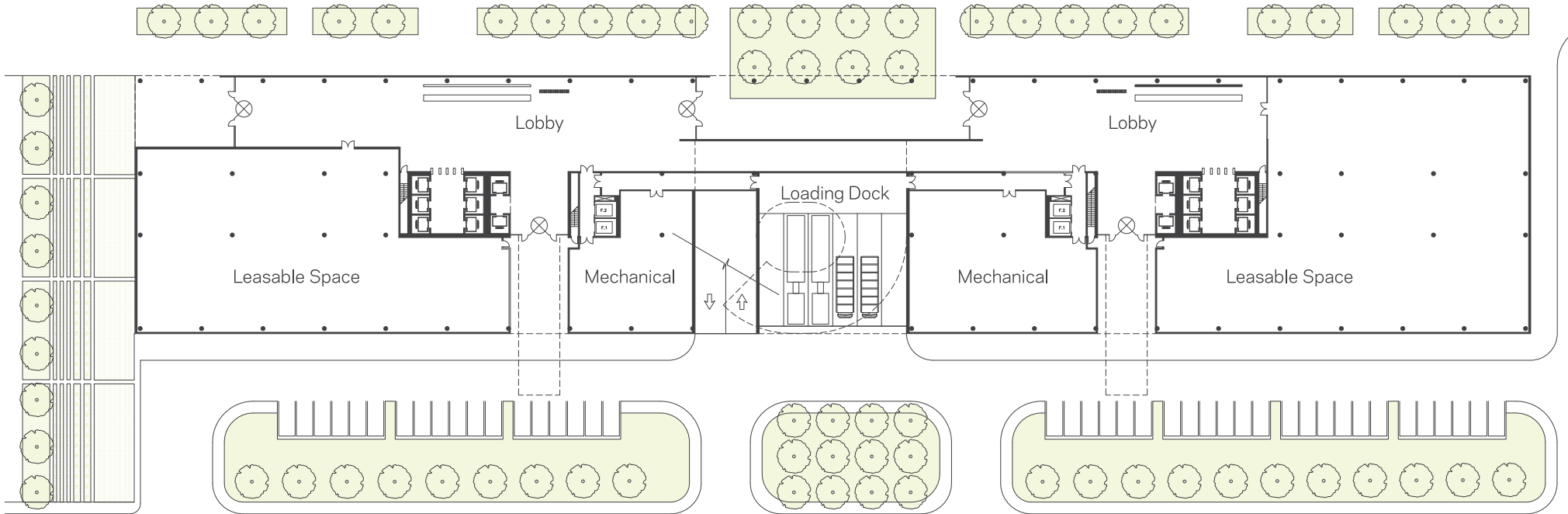


All dimensions and areas are approximate and are subject to change due to job conditions. Dimensions may vary from floor to floor. Doors and windows may vary.

Pier Six Leasing
Newport
Jersey City, New Jersey

Marylou Berk
Head of Commercial Real Estate
MBerk@LeFrak.com
(212) 708-6650

Jamie LeFrak
Principal
(212) 708-6670

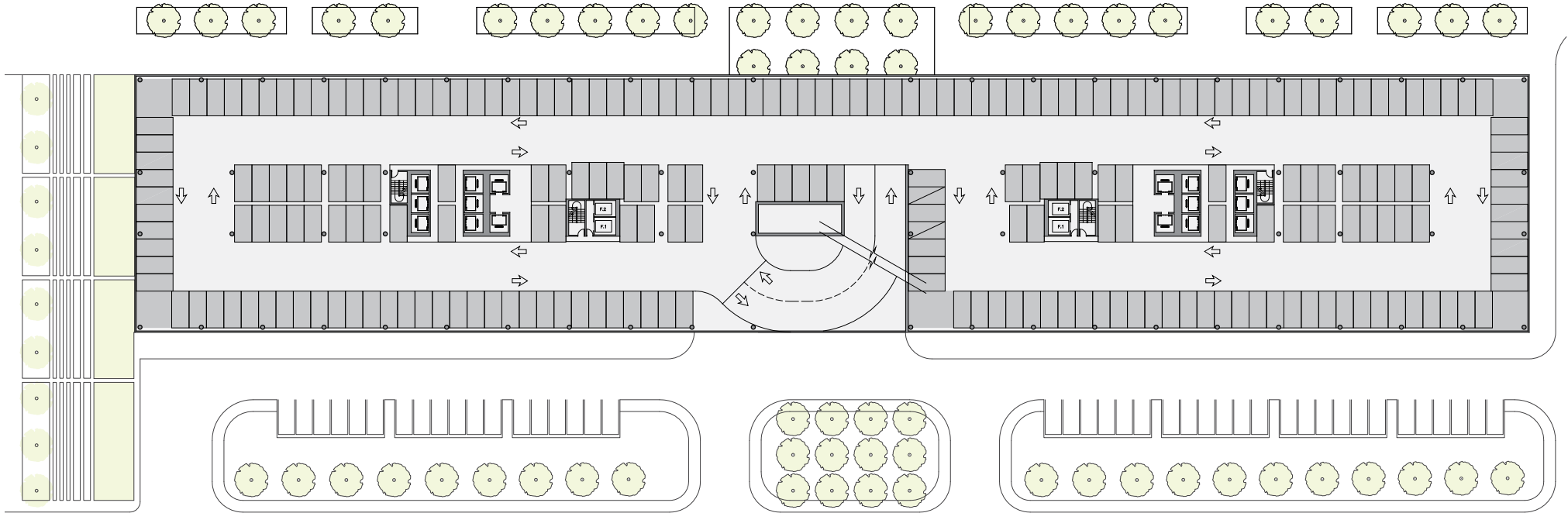


All dimensions and areas are approximate and are subject to change due to job conditions. Dimensions may vary from floor to floor. Doors and windows may vary.

Pier Six Leasing
Newport
Jersey City, New Jersey

Marylou Berk
Head of Commercial Real Estate
MBerk@LeFrak.com
(212) 708-6650

Jamie LeFrak
Principal
(212) 708-6670

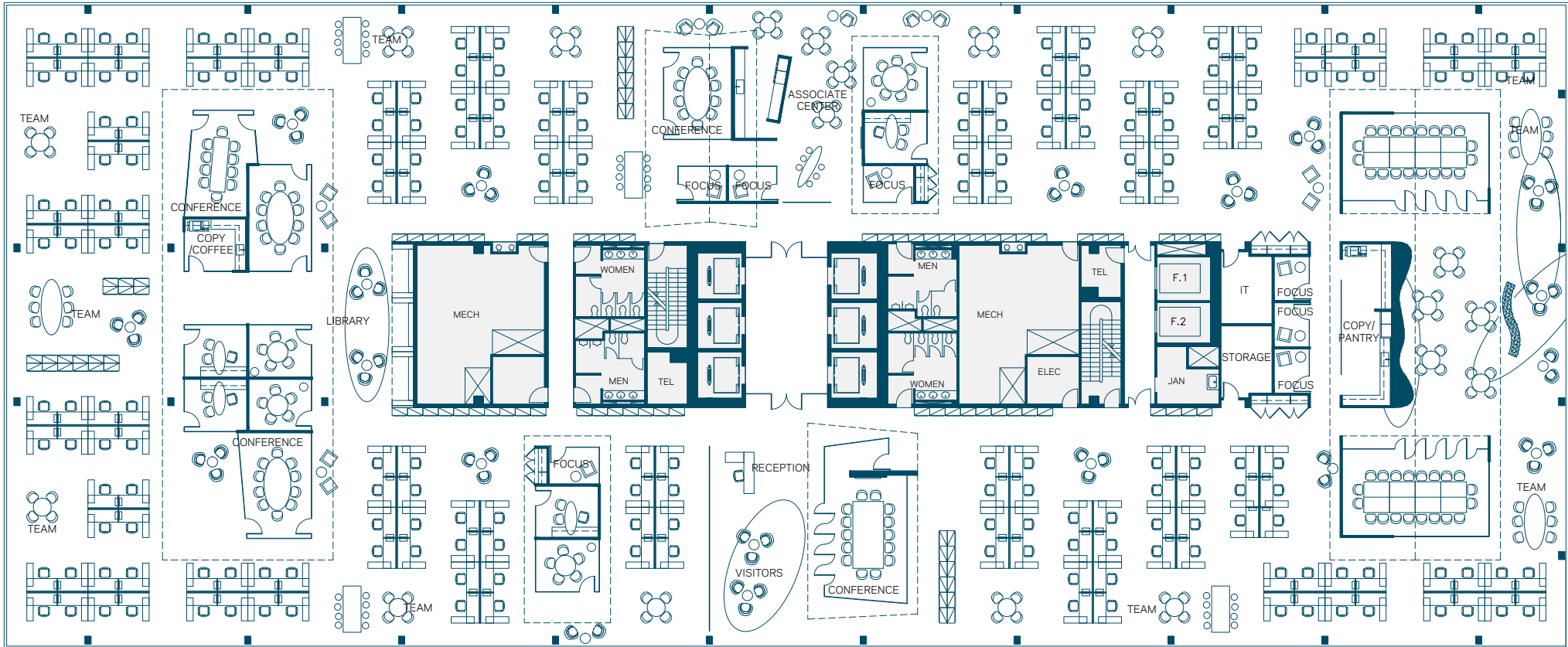


All dimensions and areas are approximate and are subject to change due to job conditions. Dimensions may vary from floor to floor. Doors and windows may vary.

Pier Six Leasing
Newport
Jersey City, New Jersey

Marylou Berk
Head of Commercial Real Estate
MBerk@LeFrak.com
(212) 708-6650

Jamie LeFrak
Principal
(212) 708-6670



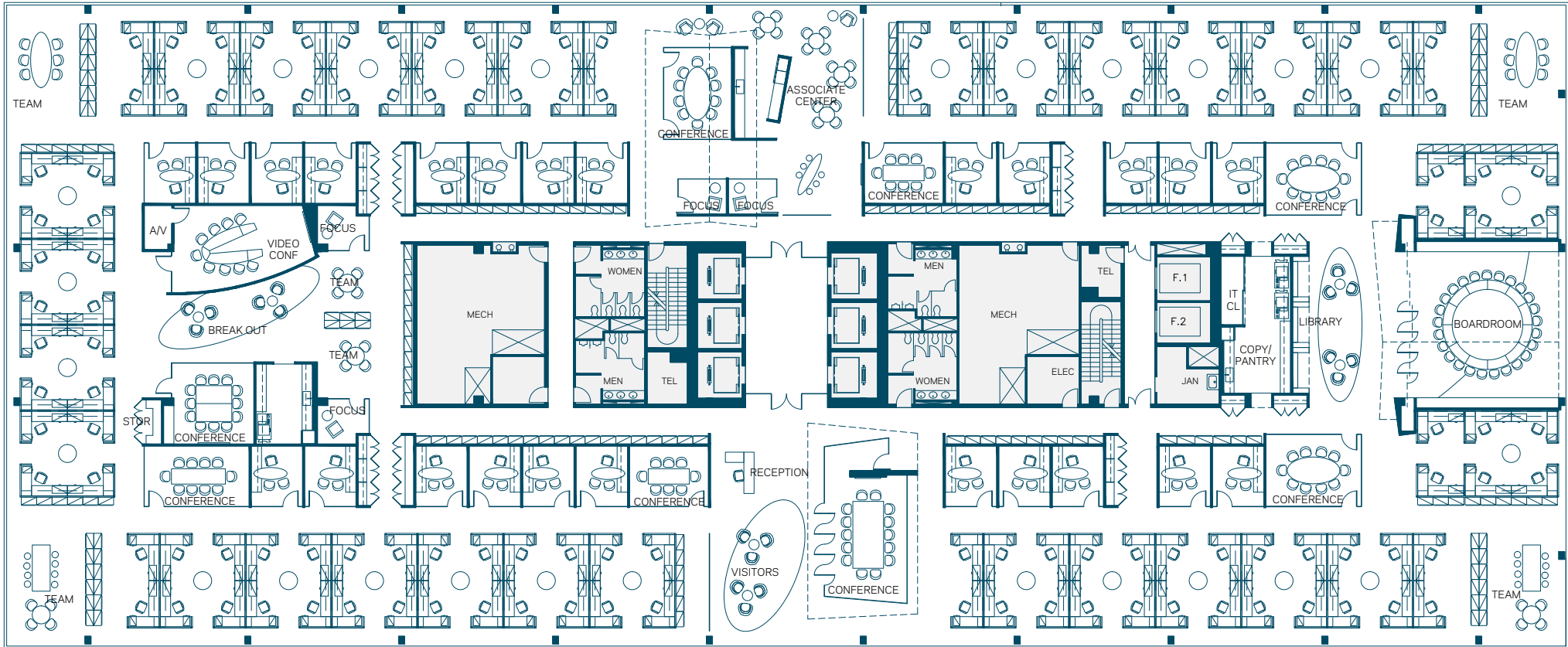
- 3 LARGE CONFERENCE ROOMS
- 4 MEDIUM CONFERENCE ROOMS
- 3 SMALL CONFERENCE ROOMS
- 4 PRIVATE OFFICES
- 7 FOCUS ROOMS
- 196 WORKSTATIONS

All dimensions and areas are approximate and are subject to change due to job conditions. Dimensions may vary from floor to floor. Doors and windows may vary.

Pier Six Leasing
Newport
Jersey City, New Jersey

Marylou Berk
Head of Commercial Real Estate
MBerk@LeFrak.com
(212) 708-6650

Jamie LeFrak
Principal
(212) 708-6670



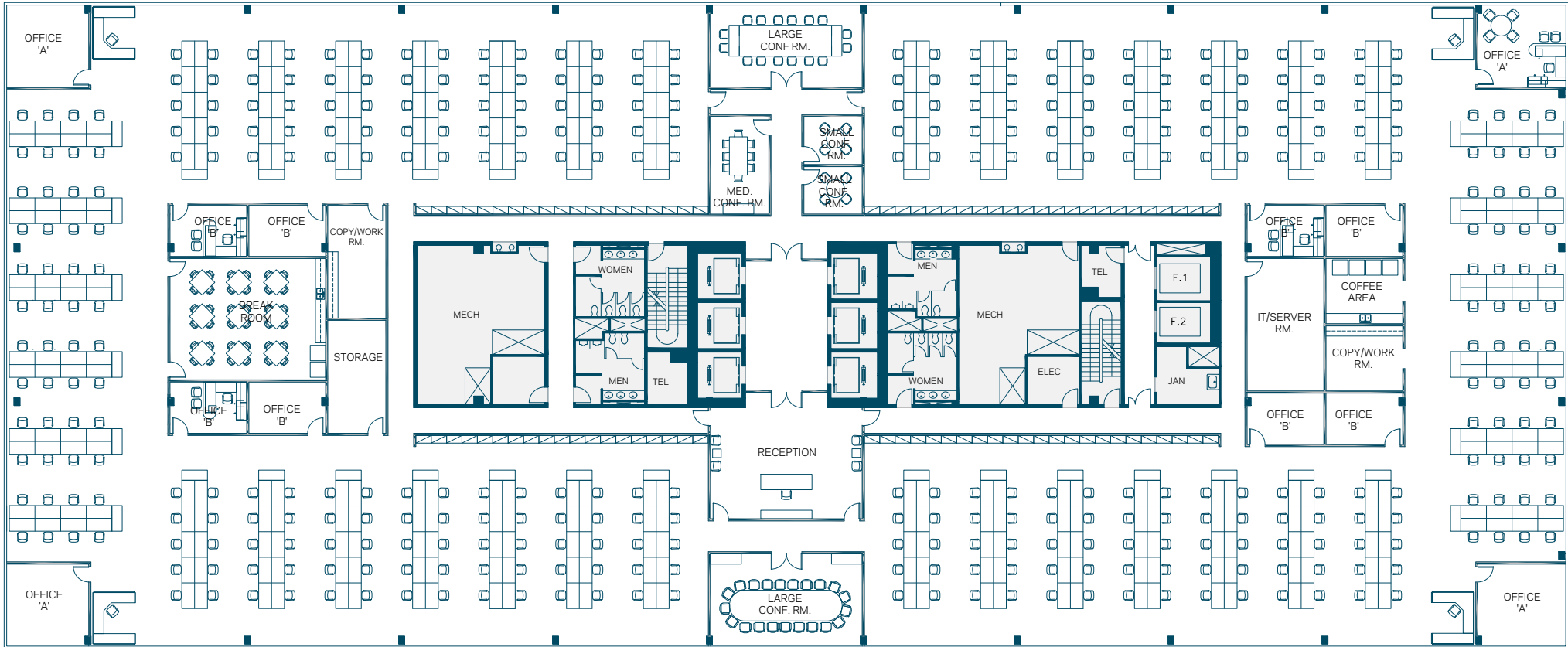
- 1 SMALL CONFERENCE ROOM
- 5 MEDIUM CONFERENCE ROOMS
- 1 VIDEO CONFERENCE ROOM
- 1 BOARD ROOM
- 4 TEAM SPACES
- 2 FOCUS ROOMS
- 24 PRIVATE OFFICES
- 1 LIBRARY
- 1 ASSOCIATE CENTER
- 129 WORKSTATIONS

All dimensions and areas are approximate and are subject to change due to job conditions. Dimensions may vary from floor to floor. Doors and windows may vary.

Pier Six Leasing
Newport
Jersey City, New Jersey

Marylou Berk
Head of Commercial Real Estate
MBerk@LeFrak.com
(212) 708-6650

Jamie LeFrak
Principal
(212) 708-6670



- 2 LARGE CONFERENCE ROOMS
- 1 MEDIUM CONFERENCE ROOM
- 2 SMALL CONFERENCE ROOMS

- 4 "A" OFFICES
- 8 "B" OFFICES

- 4 SECRETARIAL STATIONS

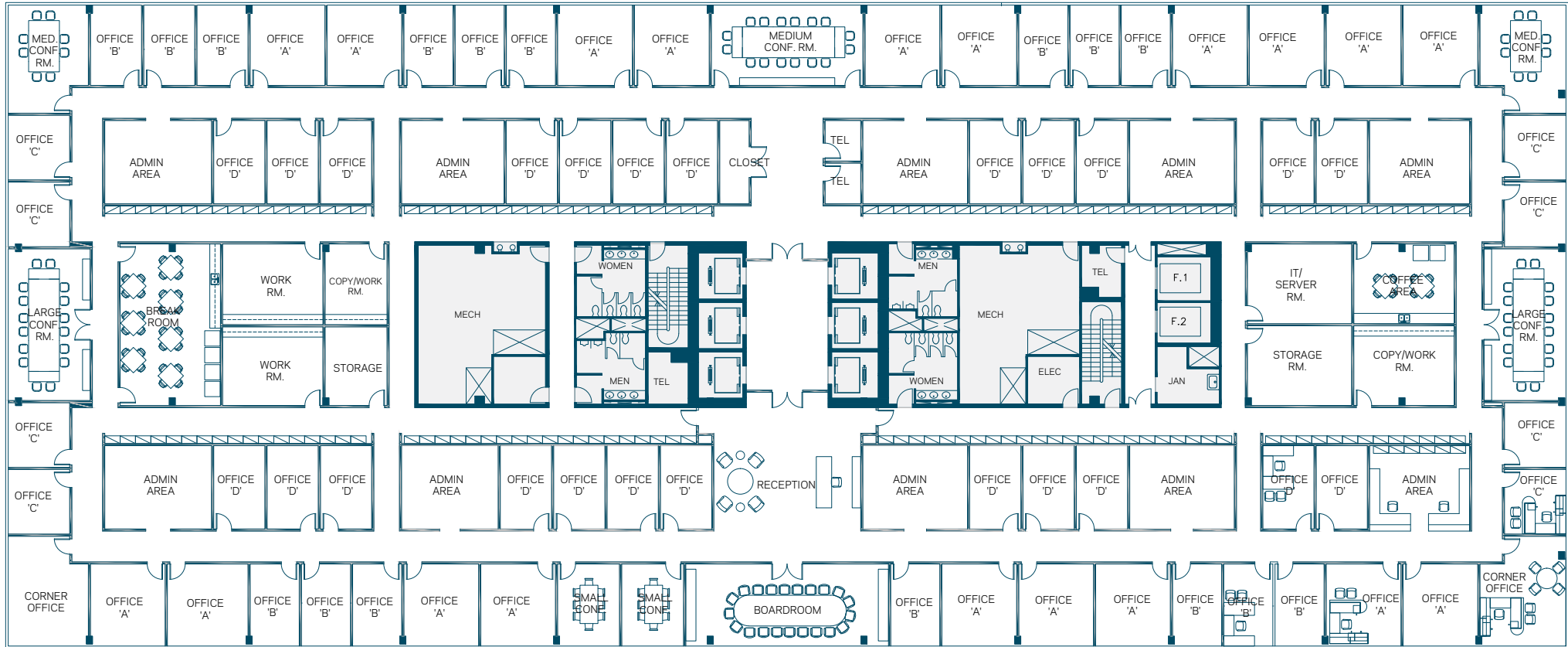
- 376 TRADING DESKS

All dimensions and areas are approximate and are subject to change due to job conditions. Dimensions may vary from floor to floor. Doors and windows may vary.

Pier Six Leasing
Newport
Jersey City, New Jersey

Marylou Berk
Head of Commercial Real Estate
MBerk@LeFrak.com
(212) 708-6650

Jamie LeFrak
Principal
(212) 708-6670



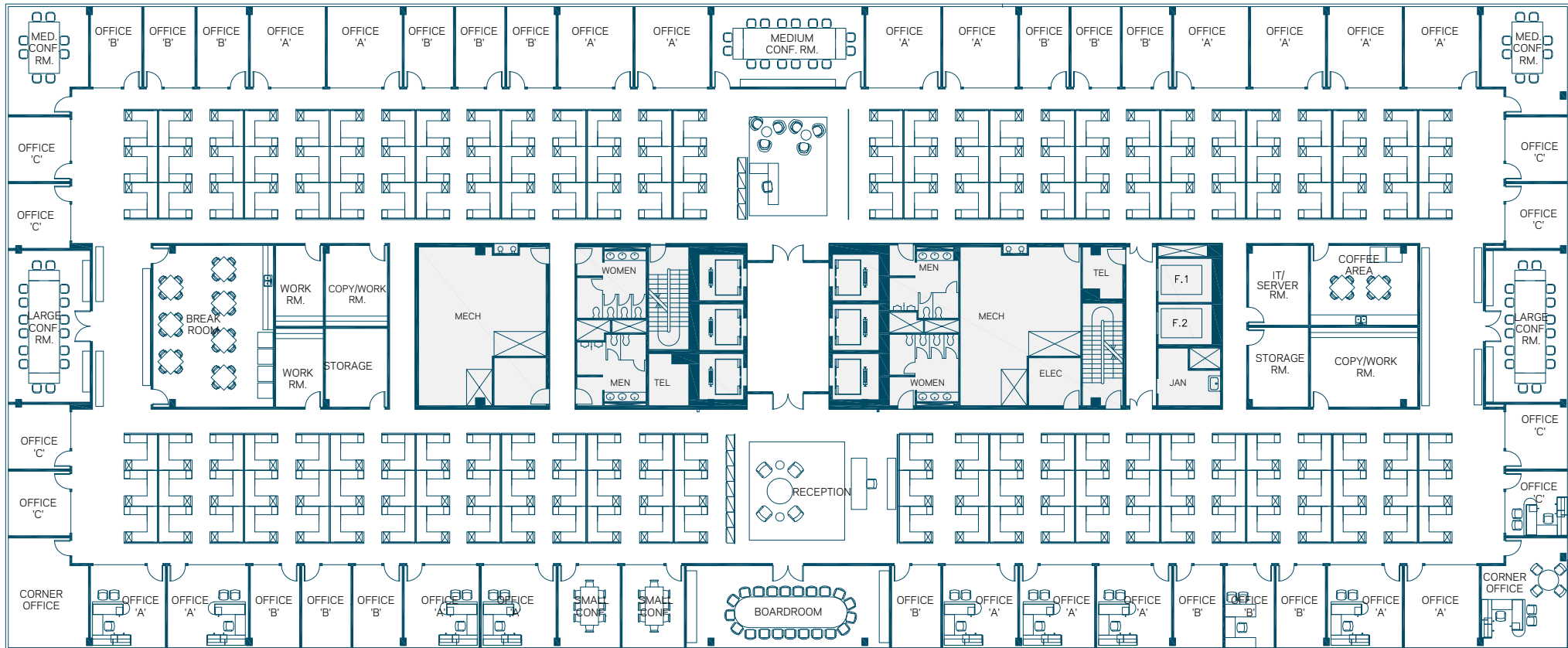
- 2 LARGE CONFERENCE ROOMS
- 19 "A" OFFICES
- 2 CORNER OFFICES
- 20 SECRETARIAL STATIONS
- 3 MEDIUM CONFERENCE ROOMS
- 16 "B" OFFICES
- 1 BOARDROOM
- 2 SMALL CONFERENCE ROOMS
- 8 "C" OFFICES
- 23 "D" OFFICES

All dimensions and areas are approximate and are subject to change due to job conditions. Dimensions may vary from floor to floor. Doors and windows may vary.

Pier Six Leasing
Newport
Jersey City, New Jersey

Marylou Berk
Head of Commercial Real Estate
MBerk@LeFrak.com
(212) 708-6650

Jamie LeFrak
Principal
(212) 708-6670



- 1 LARGE CONFERENCE ROOM
- 2 MEDIUM CONFERENCE ROOMS
- 2 SMALL CONFERENCE ROOMS
- 45 PRIVATE OFFICES
- 129 WORKSTATIONS

All dimensions and areas are approximate and are subject to change due to job conditions. Dimensions may vary from floor to floor. Doors and windows may vary.

Pier Six Leasing
Newport
Jersey City, New Jersey

Marylou Berk
Head of Commercial Real Estate
MBerk@LeFrak.com
(212) 708-6650

Jamie LeFrak
Principal
(212) 708-6670